

S-B

laboratory engineering

Exemplaire C-Frame System



Laboratory Furniture & Fume Cupboards

The S+B Exemplaire C Frame System - style with build quality

The C Frame System

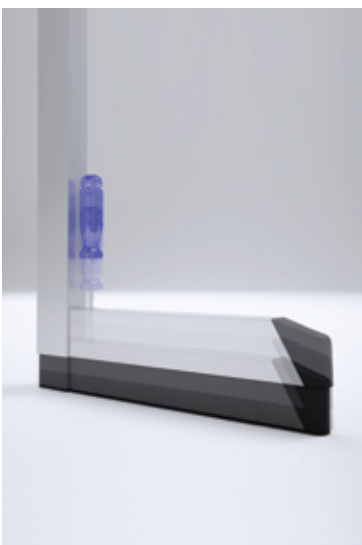
The Exemplaire C Frame bench assembly system provides worktop support independent of under bench storage cabinetry. The C Frame System has no reliance on floor fixing and its unique telescopic floor seal counters uneven floor surfaces. Push under or suspended storage cabinetry can be quickly and easily re-configured to provide our clients with flexibility.



S+B has built a reputation on providing laboratories which function to the highest standard, but which also have state of the art appearance.



Laboratory interiors with build quality and style



Unique height adjustable floor seal


The tough durable C Frame leg support is constructed from 70mm x 40mm x 12swg fully welded steel tube, which in combination with the unique angled fascia rail and rear bracing rail will support a static load of 100kg per square metre of worktop.

The whole system is finished in an easy to clean and chemically resistant epoxy powder coat with excellent resistance to knocks and wearing.

The Exemplaire C Frame System combines heavy duty functionality with attractive contemporary styling. The system demonstrates that it is possible to have a product with a functional life span of more than 25 years, but without the old fashioned workshop appearance apparent in other more basic systems.

The foot incorporates a unique telescopic floor seal to counter uneven floor surfaces and eliminates the dirt trap found under the feet of more basic C Frame systems which use adjustable height feet.

The system facilitates either push under storage cabinetry or suspended units which can traverse the full bench length free of obstruction and interruption.



The Exemplaire System creates a smart, modern, motivational learning, research and process environment.

Robust laboratory furniture with clean lines showcasing a commitment to the highest standards

A range of heights are available to suit all applications and the most widely used standing height of 950mm will allow refrigerators and other such free standing equipment to slide under easily and to relocate without having to re-configure the fascia rail.

Legs can be arranged to support perimeter benching of differing lengths and depths and fixed back to back to support island and peninsula benches of differing widths.

The Exemplaire C Frame System can be supplied with or without storage cabinetry, which can be added at a later date as applications change or when budget allows.

Push under and suspended storage cabinets include cupboards, drawer packs, sink units, tray units, waste bin units, acid and solvent storage/recovery units.



Retro fit front support leg for exceptional loads.

Wide ranging specification alternatives and finishes available



Laboratory worktop choice is wide ranging and S+B will offer advice based on best value for particular applications. Examples are post formed plastic laminate, solid grade laminate (such as Trespa), Hardwood, Corian, Polylab, Staron, Stainless Steel, Ceramic, Toughened Glass, Polypropylene and Cast Epoxy Resin. The images in this brochure show toughened glass worktops with edges protected by cast epoxy banding.

Fume cupboards – S+B manufacture and install a wide range of standard units independently tested to BSEN 14175. Please visit our web site for details or contact us for information on our Ecoline bench top fume cupboards, Ecoline 2 Walk In and Step In units and Mobiline recirculatory filtration fume cupboards.

As one of the very few UK laboratory furniture specialist whom also manufacture fume cupboards, S+B can provide our clients with a fully integrated design, the economies of scale and the interface management advantages of a single point of contact.

The Exemplaire range includes our Column System, which is a cantilever leg frame bench support. We can also supply a variety of alternative leg frame bench support systems from our Utilaire range.



Designed for researchers, educators, processors and quality controllers who want to reflect the quality of their own work in the environment in which it is carried out.





laboratory engineering

Ecoline Fume Cupboards



A range of new generation high performance, low energy fume cupboards designed to be supplied as stand alone or for clients who really want a fully integrated laboratory design.

Lab Furniture & Storage Cabinetry

S+B have over 40 years experience in the design, manufacture and installation of high specification modular, bespoke lab furniture and storage cabinetry for Pharmaceutical R&D, Healthcare, Higher Education, Food & Beverages, Utilities and industry.

Furniture For Learning

S+B also specialises in design led development, manufacture and installation of schools furniture systems for Science, Design, Control, Food and Information Technology as well as cross curricula general classroom furniture.

Contact us for a no obligation/no cost initial design and costing consultancy.



British made

Designed and Manufactured at our factory in Manchester.

Labtec Street, Swinton
Manchester M27 8SE

t: +44 (0)161 793 9333
f: +44 (0)161 728 9149

e: sales@splusb.co.uk
www.splusb.co.uk



Find us on facebook:
S+B UK LTD



Follow us on twitter:
@SBUKLTLD